

HIGH TIPPER

ETNA 22 | ETNA 30



CLASS IN CAPACITY

VGN
VAN GINKEL MACHINES

CLASS IN CAPACITY



Van Ginkel Machines specialises in the manufacture of tipper trailers for agriculture, earthmoving and road building. The extensive standard range can be adapted to the customer's needs with optional accessories. There are also possibilities to

incorporate specific requirements. Every day in Groenekan, the team is busy looking for improvements to existing products, opportunities for new models and expansion of the current programme.



VAN GINKEL MACHINES



- ⦿ **Maximum life span**
- ⦿ **Best in class**
- ⦿ **In-house production**
- ⦿ **Sophisticated concept**
- ⦿ **High quality finish**
- ⦿ **Maximum load capacity**

'What we hear from users goes straight to our drawing board!'





The multifunctional high tipper

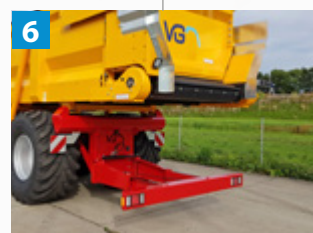
The VGM ETNA 22 high tipper has been specially developed to get the most from your harvest during the heaviest and most difficult conditions. The sophisticated VGM ETNA 22 is very versatile and easy to operate with the standard remote control. The high tipper is available in a tandem version and can be fitted with countless options.

MODEL

ETNA 22



		ETNA 22
Interior dimensions	Length	8200 mm
	Width	2250 mm
	Height	1350 mm
Track width		1950 mm
Plate material of the load area		4 mm
10-hole axles		□150,410x180
Hydraulic support leg, operated from tractor		●
Four braked wheels		●
See-through grille in the container		●
LED lighting		●
Rotatable towing eye		●
Hose support on the drawbar		●
Rubber sprung drawbar		●
3 Rubber conveyor belt		●
2 Double driven hydraulic motors		●
Unloading height 4.5 mtr		●
2 double-acting tipper cylinders		●
1 Radiographic remote control		●
Hydraulic functions on Load sensing		●
Grease nipples on central main axle		●
Excluding wheels and tyres		●
Stepladder at front of container		○
Tarpaulin rack on the chassis		○
Platform at the front of the container in combination with stepladder option		○
Wooden protective beam attached to upper edge of container		○
Plastic protective beam attached to upper edge of container		○
Hydraulic drawbar suspension		○
Hydraulic jack leg with hand pump		○
Air braking with ALR		○
Hydraulic forced steering of rear axle		○
Work lamp inside front of container (58R)		○
Rear work lamps		○
Front work lamps		○
Switch between container and chassis in combination with 1 rear work lamp		○
Reversing alarm		○
Rear tracking plug		○
Plastic toolbox		○
Scharmüller K80 pick-up hitch		○
Scharmüller K50 connection for steering		○
PVG preparation		○
1850 undercarriage for tyres up to 1700 mm high		○
Central steering knuckle grease nipples		○
Sprayed in company colour (max. 2 colours).		○
Commando steering bar with quick release		○
Rear camera		○
Fall breaker		○
Widening boards		○
5 Automatic chain lubrication		○
4 Air exhaust system		○
Perimeter lighting		○
Automatic lubrication		○
6 Hydraulic sliding bumper		○
Collection scoops		○
RDW inspection		○
Hydraulisch Dynax undercarriage		○
Height control undercarriage		○





Large, larger, largest

The VGM ETNA 30 high tipper has been specially developed to get the most from your harvest. This vehicle is multifunctional due to its sophisticated construction. The high tipper is available in a tridem version and can be fitted with all of the possible options.

MODEL

ETNA 30



HIGH TIPPER

* obligatory as of 01-01-2018 ● standard ○ optional ✕ not available

SPECIFICATIONS

		ETNA 30
Interior dimensions	Length	9800 mm
	Width	2640 mm
	Height	1340 mm
Track width		2050 mm
Plate material of the load area		4 mm
10-hole axles		□150,410x180
Hydraulic support leg, operated from tractor		●
6 braked wheels		●
3 See-through grille in the container		●
Perimeter lighting		●
LED lighting		●
Rotatable towing eye		●
Hose support on the drawbar		●
Rubber sprung drawbar		●
1 Rubber conveyor belt driven by 2 hydraulic motors		●
4 Unloading height 4.5 mtr		●
2 double-acting tipper cylinders		●
6 Radiographic remote control		●
Hydraulic functions on Load sensing		●
Grease nipples on central main axle		●
5 Hydraulic triangular axle suspension DynAx		●
First and third axle forced steering		●
Stepladder at front of container		○
Tarpaulin rack on the chassis		○
Platform at the front of the container in combination with stepladder option		○
Wooden protective beam attached to upper edge of container		○
Plastic protective beam attached to upper edge of container		○
Hydraulic drawbar suspension		○
Hydraulic jack leg with hand pump		○
Air braking ALR		○
Air braking combined with hydraulic braking		○
Work lamp inside front of container (58R)		○
Rear work lamps		○
Switch between container and chassis in combination with 1 rear work lamp		○
Reversing alarm		○
Rear tracking plug		○
Plastic toolbox		○
Scharmüller K80 pick-up hitch		○
Scharmüller K50 connection for steering		○
Central steering knuckle grease nipples		○
Sprayed in company colour (max. 2 colours).		○
Commando steering bar with quick release		○
Rear camera		○
Structure 400 mm		○
Fall breaker		○
Hydraulic sliding bumper		○
2 Chain lubrication		○



The design and technical specifications of the products in this brochure may be under development and may differ from the actual features. Subject to amendment, typesetting and printing errors. Supply in accordance with the latest submitted version of the Metaalunie terms & conditions lodged with the Clerk of the Court of the district court of Rotterdam.

© 2023 Van Ginkel Machines. All rights reserved.



**CLASS
IN
CAPACITY**



VAN GINKEL MACHINES

Groenekansweg 26

3737 AG Groenekan

The Netherlands

Tel: +31 (0)346 218118

E-mail: info@vanginkelmachines.nl

Website: www.vanginkelmachines.nl