

AGRICULTURAL TIPPER TRAILERS

EV14 | EV16 | EV18 | EV22 | EV30 | EV30L | SK22



CLASS IN CAPACITY

VG
VAN GINKEL MACHINES

CLASS IN CAPACITY



Van Ginkel Machines specialises in the manufacture of tipper trailers for agriculture, earthmoving and road building. The extensive standard range can be adapted to the customer's needs with optional accessories. There are also possibilities to

incorporate specific requirements. Every day in Groenekan, the team is busy looking for improvements to existing products, opportunities for new models and expansion of the current programme.

- ⦿ **Maximum life span**
- ⦿ **Best in class**
- ⦿ **In-house production**
- ⦿ **Sophisticated concept**
- ⦿ **High quality finish**
- ⦿ **Maximum load capacity**

'What we hear from users goes straight to our drawing board!'



THE ABSOLUTE MARKET LEADER

EV14 | EV16 | EV18 | EV22

The Everest agricultural tipper trailer is the absolute market leader for the transport of agricultural products. The sophisticated construction of this container creates huge volume which allows grain, potatoes, onions, beets and many other products to be transported and unloaded effortlessly. Also available with silage collection scoops. The unique tandem undercarriage is provided with heavy duty axles, making tyres of up to 1.70m possible. VGM agricultural tipper trailers represent durable technology, high capacity and a long life span.





LOAD AREA

SOPHISTICATED IN EVERY DETAIL



1



Wear resistant loading floor

The container is fully tapered, allowing easier unloading. The loading floor is also provided with high quality wear resistant steel.

2



Large grain chute

In the tailgate there is a large grain chute, that can be easily operated from two sides. The tailgate has a fully rubber seal.

3



Heavy duty cylinder bridge

Optimum cylinder bridge offers good distribution of force over the load area. This results in a load area that allows easy unloading.



4



LED perimeter lighting

The integrated perimeter lighting offers maximum traffic safety and visibility.

5



Shock absorbing rubbers

The load area is fully supported by heavy duty rubbers. This contributes to increased driving comfort.

6

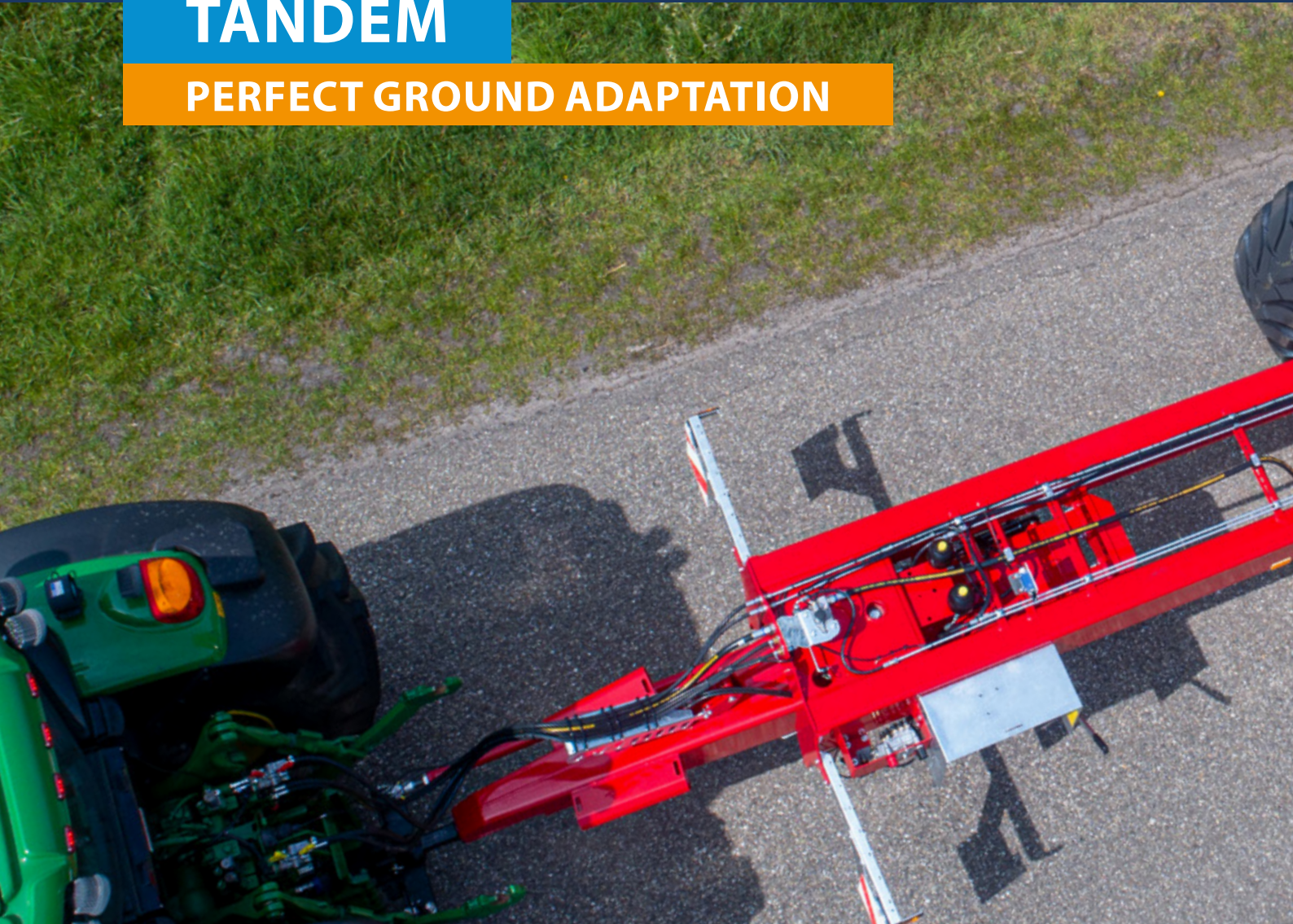


See-through grille

The wide see-through grille ensures an optimum view of your product in the load area. It has also been provided with easy to mount plastic cover plates.

TANDEM

PERFECT GROUND ADAPTATION



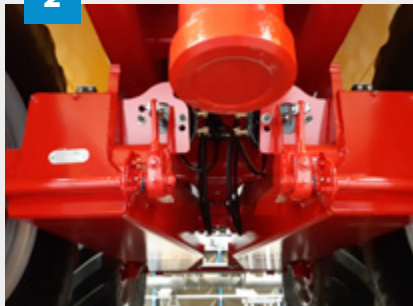
1



Tubular chassis

The chassis is constructed from tubular sections, so that the chassis always has the best possible stability.

2



Heavy duty pendulum set

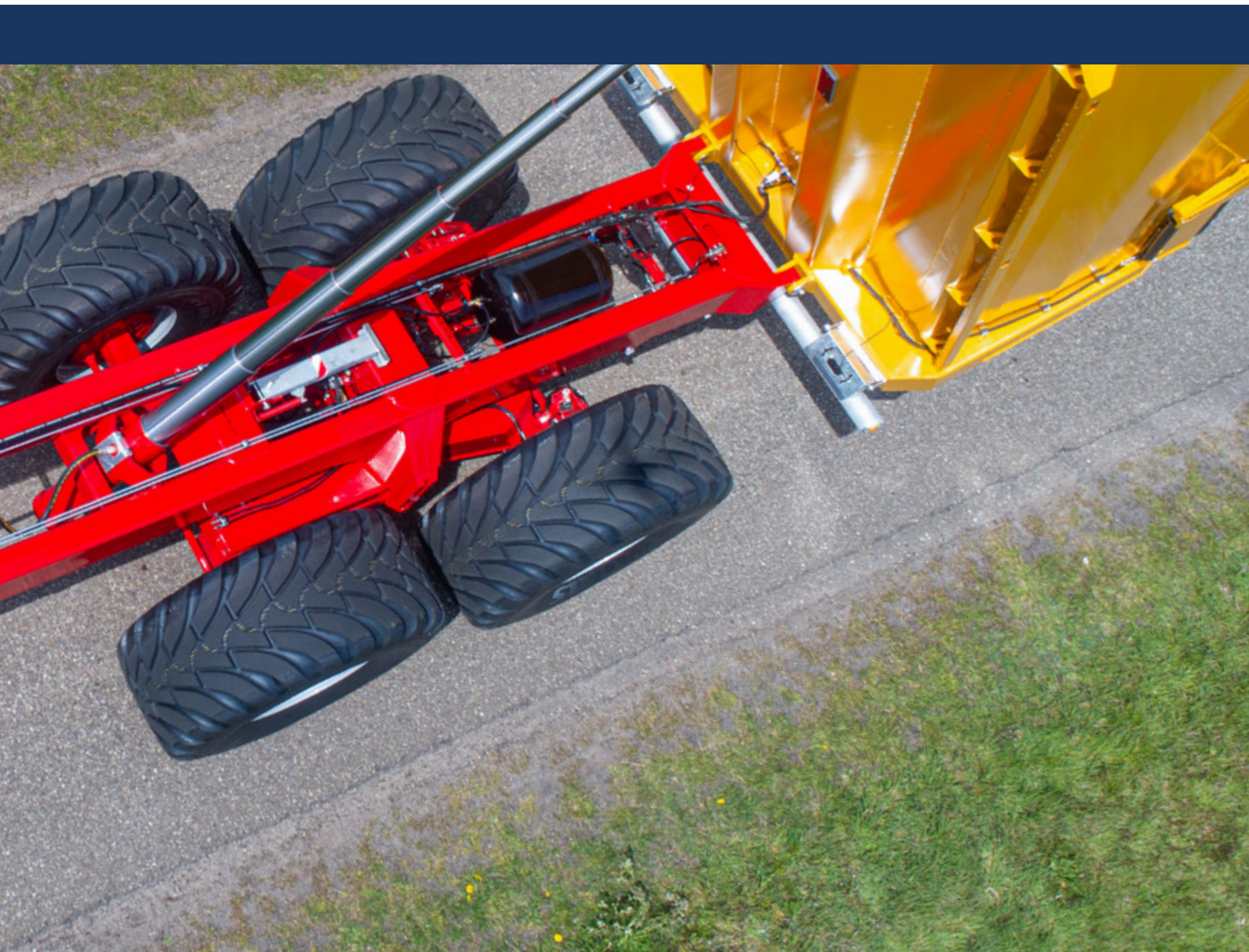
The tandem set has an eccentrically placed main axle with interchangeable bushes.

3



Drawbar

The low maintenance drawbar suspension ensures unrivalled driving comfort. It also has a fully integrated jack leg. This results in a high ground clearance.



4



Large steering angle

The narrow chassis combined with the tandem set ensures very high manoeuvrability.

5



Folding bumper

Fully European approved bumper. This bumper contributes to traffic safety without hindrance.

6



Largest possible tyres

The large variety of tandem sets offers you the widest choice in tyre sizes.

TANDEM

● standard ○ optional × not available

SPECIFICATIONS

	EV14	EV16	EV18	EV22	SK 22
Hydraulic support leg, operated from tractor	●	●	●	●	●
Tapering container, for easier unloading	●	●	●	●	●
See-through grille in the container	●	●	●	●	●
Grain chute in the rear tailgate	●	●	●	●	●
Rotatable towing eye	●	●	●	●	●
Hose support on the drawbar	●	●	●	●	●
Rubber sprung drawbar	●	●	●	●	●
Bolted mudguards on the load area	●	●	●	●	●
Grease nipples on central main axle	●	●	●	●	●
Tipper cylinder mounted in cardanic suspension	●	●	●	●	●
Excluding wheels and tyres	●	●	●	●	●
1 Stepladder at front of container	○	○	○	○	○
Tarpaulin rack on the chassis	○	○	○	○	○
6 Tarpaulin rack on the tailgate	○	○	○	○	×
Platform at the front of the container in combination with stepladder option	○	○	○	○	○
3 Rubber spout on grain chute	○	○	○	○	○
Extension of the operating handle for the grain chute on left and/or right side	○	○	○	○	○
Wooden protective beam attached to upper edge of container	○	○	○	○	○
Plastic protective beam attached to upper edge of container	○	○	○	○	○
Hydraulic drawbar suspension	○	○	○	○	○
Hydraulic jack leg with hand pump	○	○	○	○	○
Double-acting valve at rear with six-way tap in combination with hydraulic tailgate	○	○	○	○	×
Hydraulic jack leg with six-way tap	○	○	○	○	○
Air braking + ALR valve	○	○	○	○	○
Hydraulic forced steering of rear axle	○	○	○	○	○
Structure 250 mm	○	○	○	○	○
Structure 600 mm	○	○	○	○	○
2 Work lamp inside front of container (58R)	○	○	○	○	○
1 rear work lamp	○	○	○	○	○
1 rear work lamp with switch between container and chassis	○	○	○	○	○
Rear tracking plug	○	○	○	○	○
LED lighting	○	○	○	○	○
Plastic toolbox	○	○	○	○	○
Scharmüller K80 pick-up hitch	○	○	○	○	○
Scharmüller K50 connection for steering	○	○	○	○	○
Central steering knuckle grease nipples	○	○	○	○	○
Sprayed in company colour (max. 2 colours).	○	○	○	○	○
VGM cover system	○	○	○	○	○
Type LK handles on tailgate	○	○	○	○	○
Commando steering bar with quick release	○	○	○	○	○
5 Hydraulically folding LK bumper	○	○	○	○	×
RDW type approval	○	○	○	○	○
Reversing alarm	○	○	○	○	○
Wide spread undercarriage 1650	×	×	○	○	○
4 Wide spread steered undercarriage 1850	×	×	○	○	○
Wide spread steered undercarriage 2000	×	×	○	○	○



MAXIMUM LOAD CAPACITY

EV30 | EV30L

The VGM Everest 30 series has the best technology for the most difficult conditions. The undercarriage consists of a triangular axle suspension with low maintenance rubber bushes, which guarantees minimal maintenance costs and long life. With its large independent axle articulation, this agricultural tipper trailer is suitable for any terrain.





TRIDEM

STRONG ALL-ROUNDER



1



Narrow chassis

The compact construction and integrated triangular axle suspension ensure maximum stability.

2



Largest possible tyres

The VGM chassis allows you to install any tyre size of your choosing.

3

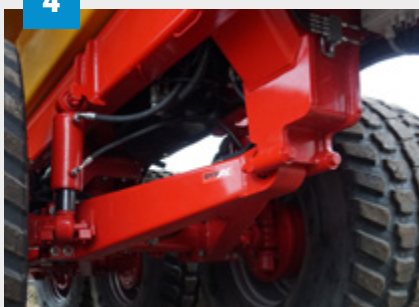


Height control

Our DynAx height control system ensures that you enjoy a high driving comfort while driving and can be adjusted to any height/position by means of the control box.



4



Low maintenance suspension

The DynAx triangular suspension is provided with low maintenance rubber bushes. This gives you minimum maintenance costs and a long life span.

5



High quality finish

For the benefit of the best bonding, all components are blasted and then sprayed with high quality 2 component paint. This results in a long life span.

6



Drawbar

The drawbar has a compact, closed construction. The ideal position of the suspension ensures a perfect alignment under severe conditions.

TRIDEM

● standard ○ optional ✕ not available

SPECIFICATIONS

	EV30	EV30L
Hydraulic support leg, operated from tractor	●	●
Tapering container, for easier unloading	●	●
See-through grille in the container	●	●
Grain chute in the rear tailgate	●	●
Front lighting width	●	●
Rotatable towing eye	●	●
Hose support on the drawbar	●	●
Rubber sprung drawbar	●	●
Bolted mudguards on the load area	●	●
Grease nipples on central main axle	●	●
Tipper cylinder mounted in cardanic suspension	●	●
Excluding wheels and tyres	●	●
Hydraulic forced steering of front and rear axle	●	●
Stepladder at front of container	○	○
Tarpaulin rack on the chassis	○	○
6 Tarpaulin rack on the tailgate	○	○
1 Platform at the front of the container in combination with stepladder option	○	○
3 Rubber spout on grain chute	○	○
Extension of the operating handle for the grain chute on left and/or right side	○	○
Wooden protective beam attached to upper edge of container	○	○
Plastic protective beam attached to upper edge of container	○	○
5 Hydraulic drawbar suspension	○	○
Hydraulic jack leg with hand pump	○	○
Double-acting valve at rear with six-way tap in combination with hydraulic tailgate	○	○
Hydraulic jack leg with six-way tap	○	○
Air braking + ALR valve	○	○
Structure 250 mm	○	○
Structure 600 mm	○	○
2 Work lamp inside front of container (58R)	○	○
1 rear work lamp	○	○
1 rear work lamp with switch between container and chassis	○	○
Rear tracking plug	○	○
LED lighting	○	○
Plastic toolbox	○	○
Scharmüller K80 pick-up hitch	○	○
Scharmüller K50 connection for steering	○	○
Central steering knuckle grease nipples	○	○
Sprayed in company colour (max. 2 colours).	○	○
VGM cover system	○	○
Type LK handles on tailgate	○	○
Commando steering bar with quick release	○	○
Folding LK bumper	○	○
Hydraulically folding LK bumper	○	○
RDW type approval	○	○
Parking brake	○	○
Reversing alarm	○	○
PTO pump with quick release valve	○	○
4 Motor/pump combination on LS	○	○
Height control	○	○



TANDEM & TRIDEM

TECHNICAL INFORMATION



EV14



EV16



EV18



EV22



EV30



EV30L



SK 22

EXTERIOR DIMENSIONS			INTERIOR DIMENSIONS		
LENGTH	WIDTH	HEIGHT	LENGTH	WIDTH	HEIGHT
7000 mm	2550 mm	2400 mm	5500 mm	2400 mm	900 mm
7500 mm	2550 mm	2900 mm	6000 mm	2400 mm	1400 mm
8200 mm	2550 mm	2900 mm	6500 mm	2400 mm	1400 mm
8900 mm	2550 mm	2900 mm	7200 mm	2400 mm	1400 mm
10200 mm	3500 mm	3100 mm	8500 mm	2400 mm	1400 mm
11000 mm	2550 mm	3100 mm	9300 mm	2400 mm	1400 mm
9500 mm	2550 mm	3500 mm	7800 mm	2400 mm	2000 mm

TRACK WIDTH	PLATE MATERIAL OF THE LOAD AREA	10-HOLE AXLES	NUMBER OF BRAKED WHEELS
1950 mm	6-4 mm	o130, 406x120	4
1950 mm	floor 5 mm Hardox walls 4 mm	o130, 406x120	4
1950 mm	floor 5 mm Hardox walls 4 mm	o150, 410x180	4
1950 mm	floor 5 mm Hardox walls 4 mm	o150, 410x180	4
2050 mm	floor 5 mm Hardox walls 4 mm	o150, 410x180	6
2050 mm	floor 5 mm Hardox walls 4 mm	o150, 410x180	6
1950 mm	5-4 mm	o150, 410x180	6

The design and technical specifications of the products in this brochure may be under development and may differ from the actual features. Subject to amendment, typesetting and printing errors. Supply in accordance with the latest submitted version of the Metaalunie terms & conditions lodged with the Clerk of the Court of the district court of Rotterdam.

© 2023 Van Ginkel Machines. All rights reserved.



**CLASS
IN
CAPACITY**



VAN GINKEL MACHINES

Groenekansweg 26

3737 AG Groenekan

The Netherlands

Tel: +31 (0)346 218118

E-mail: info@vanginkelmachines.nl

Website: www.vanginkelmachines.nl