

# SAND TIPPER TRAILERS

## ROCKY

14 | 16 | 18 | 18-L | 18-XL | 22-L | 24 | 24-L | 24-XL | 26 | 26-L | 26-XL | 34 | 35 | 36



## CLASS IN CAPACITY

  
VAN GINKEL MACHINES

# CLASS IN CAPACITY



Van Ginkel Machines specialises in the manufacture of tipper trailers for agriculture, earthmoving and road building. The extensive standard range can be adapted to the customer's needs with optional accessories. There are also possibilities to

incorporate specific requirements. Every day in Groenekan, the team is busy looking for improvements to existing products, opportunities for new models and expansion of the current programme.



VAN GINKEL MACHINES



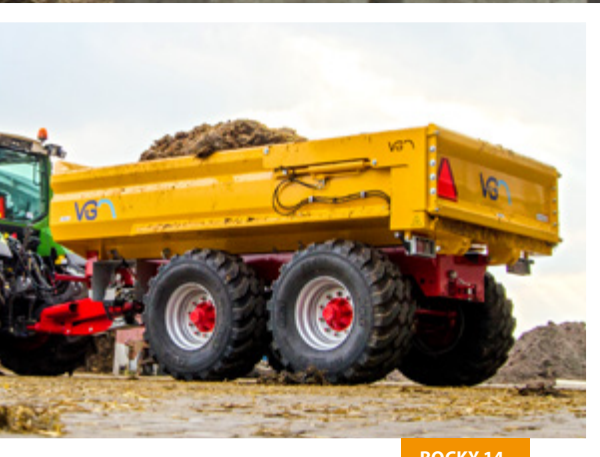
- ⦿ Maximum life span
- ⦿ Best in class
- ⦿ In-house production
- ⦿ Sophisticated concept
- ⦿ High quality finish
- ⦿ Maximum load capacity

*'What we hear from users goes straight to our drawing board!'*



# THE COMPACT SAND TIPPER TRAILER

The compact sand tipper trailer is a robust tandem axle tipper trailer which is suitable for heavy work. The tipper is compact in construction and due to its low load height a small excavator can easily be loaded onto it. The load area is manufactured from Hardox steel as standard and is tapered. This tipper trailer is tailor-made and suitable for almost any application.



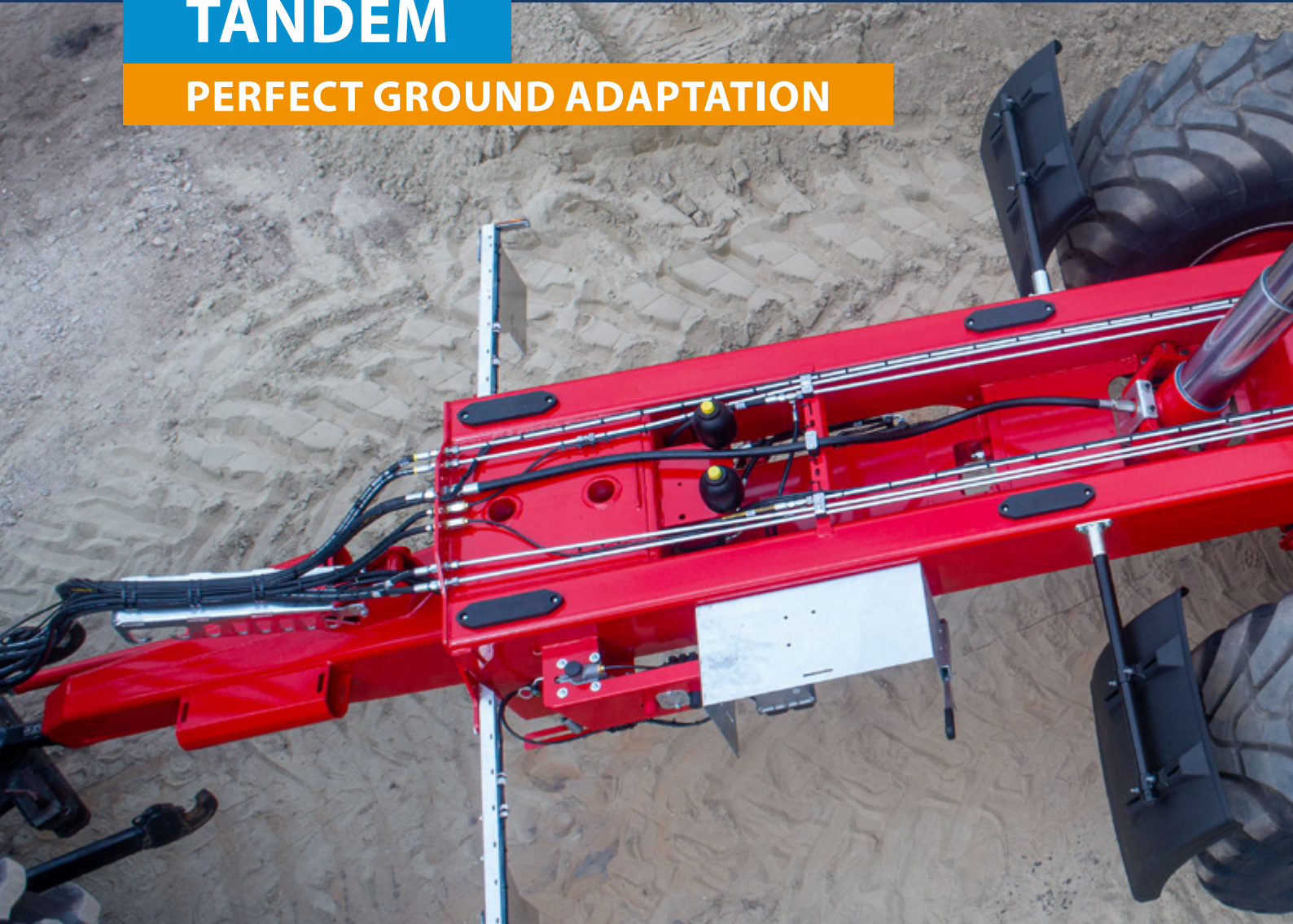
ROCKY 14



ROCKY 16

# TANDEM

## PERFECT GROUND ADAPTATION



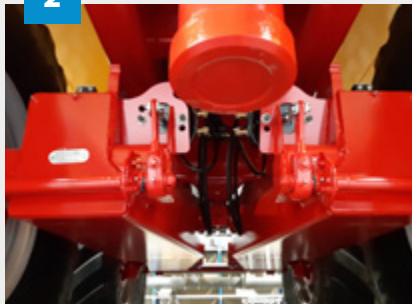
1



**Tubular chassis**

The chassis is constructed from tubular sections, so that the chassis always has the best possible stability.

2



**Heavy duty pendulum set**

The tandem set has an eccentrically placed main axle with interchangeable bushes.

3



**Drawbar**

The low maintenance drawbar suspension ensures unrivalled driving comfort. It also has a fully integrated jack leg. This results in a high ground clearance.



4



**Large steering angle**

The narrow chassis combined with the tandem set ensures very high manoeuvrability.

5



**Folding bumper**

Fully European approved bumper. This bumper contributes to traffic safety without hindrance.

6



**Shock absorbing rubbers**

The load area is fully supported by heavy duty rubbers. This contributes to increased driving comfort.

# THE ROBUST SAND TIPPER TRAILER

The extensive load area of the robust sand tipper trailers make them exceptionally suitable for heavier work. The 10-hole BPW axles ensure perfect handling and excellent braking capacity. Available with or without aluminium roof hatches and with a range of options, such as a forced steering rear axle. This tailors a standard product to your exact needs.



ROCKY 18-XL





ROCKY 18

# LOAD AREA

## SOPHISTICATED IN EVERY DETAIL



1



**Wear resistant load area**

The container is fully tapered, allowing easier unloading. The entire container is also provided with high quality wear resistant steel.

2



**Fully welded tipper container**

As the load area is fully welded, rust formation in the joints is prevented. This guarantees a long life span.

3



**Heavy duty cylinder bridge**

Optimum cylinder bridge offers good distribution of force over the load area. This results in a load area that allows easy unloading.



4



**LED perimeter lighting**

The integrated perimeter lighting offers maximum traffic safety and visibility.

5



**High quality finish**

For the benefit of the best bonding, all components are blasted and then sprayed with high quality 2 component paint. This results in a long life span.

6



**Large opening for unloading**

The large distance between the hinge pin and the rear of the tailgate ensures a large opening for unloading and allows the use of extensions.

# STRENGTH FROM EXPERIENCE

This is the absolute market leader in the transport of heavy loads. The fully welded seams and wear-resistant Hardox steel guarantee long life and minimum maintenance costs. The chassis is constructed from tubular sections which ensure great stability.





ROCKY 26



ROCKY 24-XL

# AUTOMATIC COVER SYSTEM

## VGM MULTI CAPS

The multi cap is VGM's automatic cover system for tipper trailers and containers. The multi cap is hydraulically driven by the hydraulics from the tractor. For each tipper container, you can select the correct multi cap.





## STRONG ALL-ROUNDER

This soil tipper was designed for daily use under the severest conditions and is known for its reliability and low maintenance costs. Due to VGM's proven innovative character, this soil tipper is the most extensively developed system available on the market and is highly suitable for a large variety of applications.



ROCKY 26-L







ROCKY 26-XL

# HEAVY DUTY SAND TIPPER TRAILER

This heavy duty sand tipper trailer has the best technology for the most difficult conditions. The undercarriage consists of a triangular axle suspension with low maintenance rubber bushes, which guarantees minimal maintenance costs and long life. With its large independent axle articulation, this sand tipper trailer is suitable for any terrain.



ROCKY 34



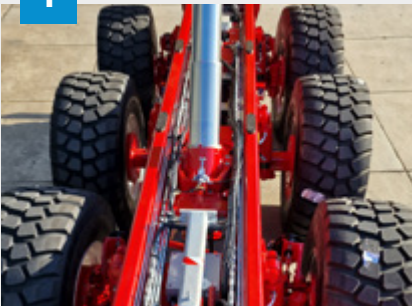
ROCKY 36

# TRIDEM

## STRONG ALL-ROUNDER



1



**Narrow chassis**

The compact construction and integrated triangular axle suspension ensure maximum stability.

2



**Largest possible tyres**

The VGM chassis allows you to install any tyre size of your choosing.

3

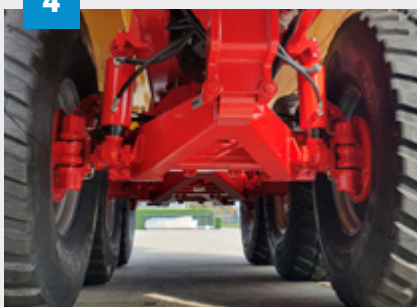


**Height control**

Our DynAx height control system ensures that you enjoy a high driving comfort while driving and can be adjusted to any height/position by means of the control box.



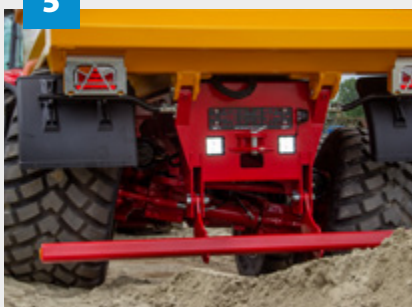
4



#### Low maintenance suspension

The DynAx triangular suspension is provided with low maintenance rubber bushes. This gives you minimum maintenance costs and a long life span.

5



#### Large suspension travel

The unique DynAx triangular suspension is highly suitable for very rough and difficult terrains. The large suspension travel and pendulum travel make sure that the wheels always remain in contact with the terrain.

6



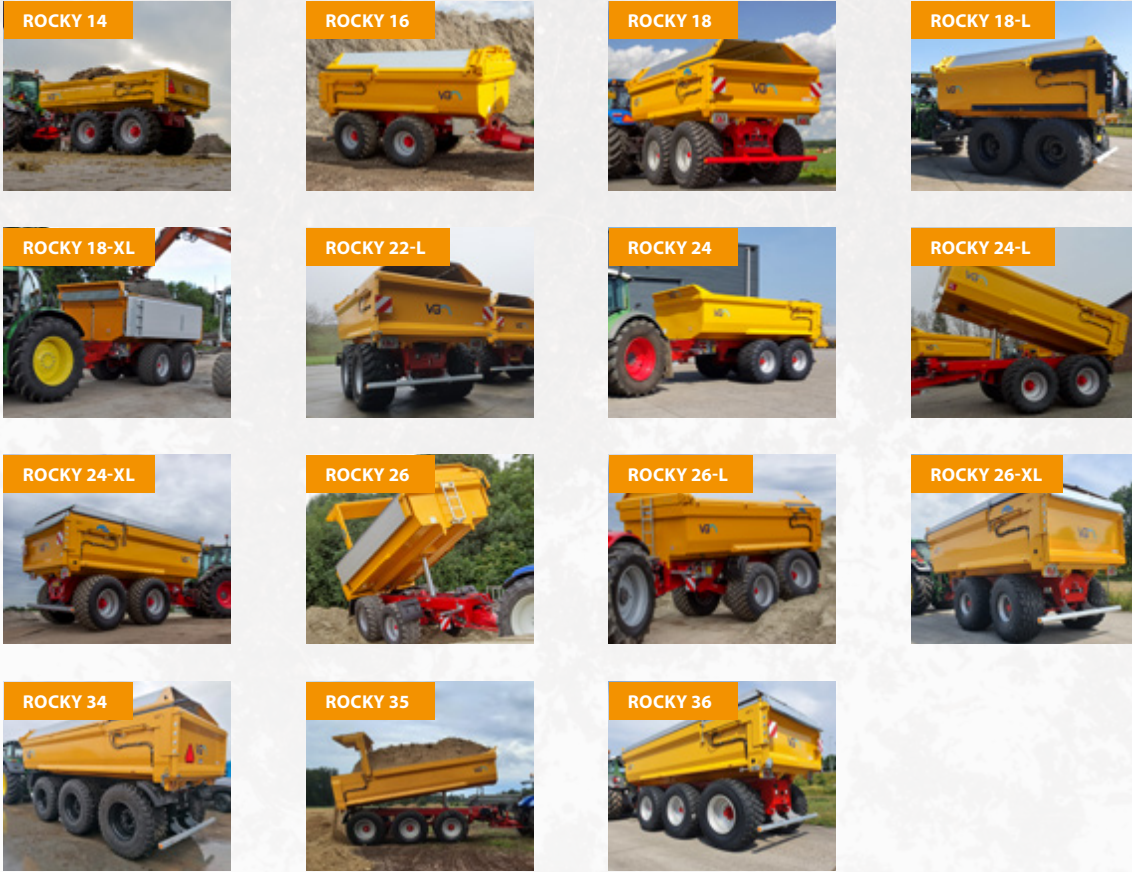
#### Drawbar

The drawbar has a compact, closed construction. The ideal position of the suspension ensures a perfect alignment under severe conditions.

# STANDARD

● standard ○ optional × not available

# SPECIFICATIONS



	ROCKY 14	ROCKY 16	ROCKY 18	ROCKY 18-L	ROCKY 18-XL	ROCKY 22-L	ROCKY 24	ROCKY 24-L	ROCKY 24-XL	ROCKY 26	ROCKY 26-L	ROCKY 26-XL	ROCKY 34	ROCKY 35	ROCKY 36
Rotatable towing eye Ø50mm	●	●	●	●	●	●	●	●	●	●	●	●	●	●	●
Hydraulic double-acting support leg, operated from tractor	●	●	●	●	●	●	●	●	●	●	●	●	●	●	●
Hose support on the drawbar	●	●	●	●	●	●	●	●	●	●	●	●	●	●	●
Rubber sprung drawbar	●	●	●	●	●	●	●	●	●	●	●	●	×	×	×
Hydraulically suspended drawbar	×	×	×	×	×	○	○	○	○	○	○	○	●	●	●
Tipper cylinder mounted in cardanic suspension	●	●	●	●	●	●	●	●	●	●	●	●	●	●	●
Tapered container	●	●	●	●	●	●	●	●	●	●	●	●	●	●	●
Hydraulic double-acting tailgate	●	●	●	●	●	●	●	●	●	●	●	●	●	●	●
Bolted mudguards on the load area	●	●	●	●	●	●	●	●	●	●	●	●	●	●	●
LED lighting	●	●	●	●	●	●	●	●	●	●	●	●	●	●	●
Perimeter lighting in the mudguard	●	●	●	●	●	●	●	●	●	●	●	●	●	●	●
Tandem axle heavy transport tipper trailer	●	●	●	●	●	●	●	●	●	●	●	●	×	×	×
Central steering knuckle grease nipples	●	●	●	●	●	●	●	●	●	●	●	●	×	×	×
Tri-axle heavy transport tipper trailer	×	×	×	×	×	×	×	×	×	×	×	×	●	●	●
First and third axle forced steering	×	×	×	×	×	×	×	×	×	×	×	×	●	●	●
Hydraulically suspended triangle axle suspension DynAx	×	×	×	×	×	×	×	×	×	○	○	○	●	●	●
Excluding wheels and tyres	●	●	●	●	●	●	●	●	●	●	●	●	●	●	●
Load dependant air braking	●	●	●	●	●	●	●	●	●	●	●	●	●	●	●
RDW approved 40km/h	●	●	●	●	●	●	●	●	●	●	●	●	●	●	●
Rear trailer hitch	●	●	●	●	●	●	●	●	●	●	●	●	●	●	●

# OPTIONAL

● standard ○ optional × not available

	ROCKY 14	ROCKY 16	ROCKY 18	ROCKY 18-L	ROCKY 18-XL	ROCKY 22-L	ROCKY 24	ROCKY 24-L	ROCKY 24-XL	ROCKY 26	ROCKY 26-L	ROCKY 26-XL	ROCKY 34	ROCKY 35	ROCKY 36
Hydraulic support leg with hand pump	○	○	○	○	○	○	○	○	○	○	○	○	○	○	○
Hydraulic support leg with six-way tap	○	○	○	○	○	○	○	○	○	○	○	○	○	○	○
Pick-up hitch K80	○	○	○	○	○	○	○	○	○	○	○	○	○	○	○
Steered rear axle	○	○	○	○	○	○	○	○	○	○	○	○	●	●	●
Steering ball joint K50	○	○	○	○	○	○	○	○	○	○	○	○	○	○	○
Commando steering bar with quick release	×	×	×	○	○	○	○	○	○	○	○	○	×	×	×
Electrical steering alignment	○	○	○	○	○	○	○	○	○	○	○	○	○	○	○
2 Rear work lamps	○	○	○	○	○	○	○	○	○	○	○	○	○	○	○
2 Front work lamps	○	○	○	○	○	○	○	○	○	○	○	○	○	○	○
2 Rear flash units	○	○	○	○	○	○	○	○	○	○	○	○	○	○	○
Reversing camera	○	○	○	○	○	○	○	○	○	○	○	○	○	○	○
Reversing alarm	○	○	○	○	○	○	○	○	○	○	○	○	○	○	○
Rear tracking plug	○	○	○	○	○	○	○	○	○	○	○	○	○	○	○
Lockable control box	○	○	○	○	○	○	○	○	○	○	○	○	○	○	○
SS toolbox	○	○	○	○	○	○	○	○	○	○	○	○	○	○	○
Plastic toolbox	○	○	○	○	○	○	○	○	○	○	○	○	○	○	○
2 Front plastic mudguards	○	○	○	○	○	○	○	○	○	○	○	○	○	○	○
2 Rear plastic mudguards	○	○	○	○	○	○	○	○	○	○	○	○	○	○	○
2 Front aluminium mudguards	○	○	○	○	○	○	○	○	○	○	○	○	○	○	○
2 Rear aluminium mudguards	○	○	○	○	○	○	○	○	○	○	○	○	○	○	○
Hydraulic folding bumper	×	○	○	○	○	○	○	○	○	○	○	○	○	○	○
Scoop support on the underside of container	○	○	○	○	○	○	○	○	○	○	○	○	○	○	○
Left and right dredge clamps	○	○	○	○	○	○	○	○	○	○	○	○	○	○	○
Water barrier	○	○	○	○	○	○	○	○	○	○	○	○	○	○	○
Stepladder at front of container	○	○	○	○	○	○	○	○	○	○	○	○	○	○	○
Bulkhead at top front of container	○	○	○	○	×	○	○	○	×	○	○	×	○	○	×
Aluminium cover system MK 1	×	○	○	○	×	○	○	○	×	○	○	×	○	○	×
Aluminium cover system MK 5	○	○	○	○	×	○	○	○	×	○	○	×	○	○	×
Aluminium cover system MK 2	×	×	×	×	○	×	×	×	○	×	×	○	×	×	○
Asphalt board	×	×	×	×	○	×	×	×	○	×	×	○	×	×	○
Security on aluminium roof hatches	○	○	○	○	○	○	○	○	○	○	○	○	○	○	○
Uncalibrated weighing system	×	×	×	×	×	×	×	×	×	○	○	○	○	○	○
Semi-automatic height control	×	×	×	×	×	×	×	×	×	○	○	○	○	○	○
Tilting motor pump combination on LS	○	○	○	○	○	○	○	○	○	○	○	○	○	○	○
Tilting on LS	○	○	○	○	○	○	○	○	○	○	○	○	○	○	○
PTO pump with wide angle PTO shaft	○	○	○	○	○	○	○	○	○	○	○	○	○	○	○
Quick release valve	○	○	○	○	○	○	○	○	○	○	○	○	○	○	○
Front axle lift axle	×	×	×	×	×	×	×	×	×	×	×	×	○	○	○
Automatic grease lubrication system	○	○	○	○	○	○	○	○	○	○	○	○	○	○	○
Sprayed in company colour (max. 2 colours)	○	○	○	○	○	○	○	○	○	○	○	○	○	○	○

# TANDEM

		ROCKY 14	ROCKY 16	ROCKY 18
Exterior dimensions	Length	5700 mm	5825 mm	6025 mm
	Width	2400 mm	2450 mm	2550 mm
	Height	2060 mm	2255 mm	2465 mm
Interior dimensions	Length	4300 mm	4300 mm	4500 mm
	Width	2200 mm	2200 mm	2300 mm
	Height	700 mm	900 mm	900 mm
Track width		1750 mm	1900 mm	1950 mm
Plate material of the load area (HB 450)	Bottom + wall	5+4 mm	5+5 mm	6+6 mm
10-hole axles		□100, 400x80	□130, 406x120	□150, 410x180
Number of braked wheels		4	4	4

		ROCKY 18-L	ROCKY 18-XL	ROCKY 22-L
Exterior dimensions	Length	6025 mm	6025 mm	6440 mm
	Width	2550 mm	2550 mm	2550 mm
	Height	2615 mm	2745 mm	2615 mm
Interior dimensions	Length	4500 mm	4500 mm	4750 mm
	Width	2300 mm	2300 mm	2300 mm
	Height	1050 mm	1180 mm	1050 mm
Track width		1950 mm	1950 mm	1950 mm
Plate material of the load area (HB 450)	Bottom + wall	6+6 mm	6+6 mm	6+6 mm
10-hole axles		□150, 410x180	□150, 410x180	□150, 410x180
Number of braked wheels		4	4	4

		ROCKY 24	ROCKY 24-L	ROCKY 24-XL
Exterior dimensions	Length	6690 mm	6690 mm	6690 mm
	Width	2550 mm	2550 mm	2550 mm
	Height	2465 mm	2615 mm	2745 mm
Interior dimensions	Length	5000 mm	5000 mm	5000 mm
	Width	2300 mm	2300 mm	2300 mm
	Height	900 mm	1050 mm	1180 mm
Track width		1950 mm	1950 mm	1950 mm
Plate material of the load area (HB 450)	Bottom + wall	6+6 mm	6+6 mm	6+6 mm
10-hole axles		□150, 410x180	□150, 410x180	□150, 410x180
Number of braked wheels		4	4	4

		ROCKY 26	ROCKY 26L	ROCKY 26XL
Exterior dimensions	Length	6990 mm	6990 mm	6990 mm
	Width	2550 mm	2550 mm	2550 mm
	Height	2700 mm	2780 mm	2830 mm
Interior dimensions	Length	5300 mm	5300 mm	5300 mm
	Width	2300 mm	2300 mm	2300 mm
	Height	1050 mm	1130 mm	1180 mm
Track width		1950 mm	1950 mm	1950 mm
Plate material of the load area (HB 450)	Bottom + wall	6+6 mm	6+6 mm	6+6 mm
10-hole axles		□150, 410x180	□150, 410x180	□150, 410x180
Number of braked wheels		4	4	4





ROCKY 26-L

# TRIDEM

## TECHNICAL INFORMATION

		ROCKY 34	ROCKY 35	ROCKY 36
Exterior dimensions	Length	8290 mm	8290 mm	8290 mm
	Width	2550 mm	2550 mm	2550 mm
	Height	2700 mm	2780 mm	2830 mm
Interior dimensions	Length	6600 mm	6600 mm	6600 mm
	Width	2300 mm	2300 mm	2300 mm
	Height	1050 mm	1130 mm	1180 mm
Track width		1950 mm	1950 mm	1950 mm
Plate material of the load area (HB 450)	Bottom + wall	6+6 mm	6+6 mm	6+6 mm
10-hole axles		□150, 410x180	□150, 410x180	□150, 410x180
Number of braked wheels		6	6	6



ROCKY 36



ROCKY 36



ROCKY 36



ROCKY 35



ROCKY 35



ROCKY 34



ROCKY 36



ROCKY 36



ROCKY 36

The design and technical specifications of the products in this brochure may be under development and may differ from the actual features. Subject to amendment, typesetting and printing errors. Supply in accordance with the latest submitted version of the Metaalunie terms & conditions lodged with the Clerk of the Court of the district court of Rotterdam.

© 2023 Van Ginkel Machines. All rights reserved.



**CLASS  
IN  
CAPACITY**



**VAN GINKEL MACHINES**

Groenekansweg 26

3737 AG Groenekan

The Netherlands

Tel: +31 (0)346 218118

E-mail: [info@vanginkelmachines.nl](mailto:info@vanginkelmachines.nl)

Website: [www.vanginkelmachines.nl](http://www.vanginkelmachines.nl)